

PART OF THE S. 1/2 OF SECTION 29, AND N. 1/2 OF SECTION 32, T.7N., R.1W., S.L.B. & M. & PART OF LOTS 14 & 40, PLAT "B" NORTH OGDEN SURVEY
NORTH OGDEN RANCHETTES - UNIT 1

TAXING UNIT: 10

IN NORTH OGDEN CITY

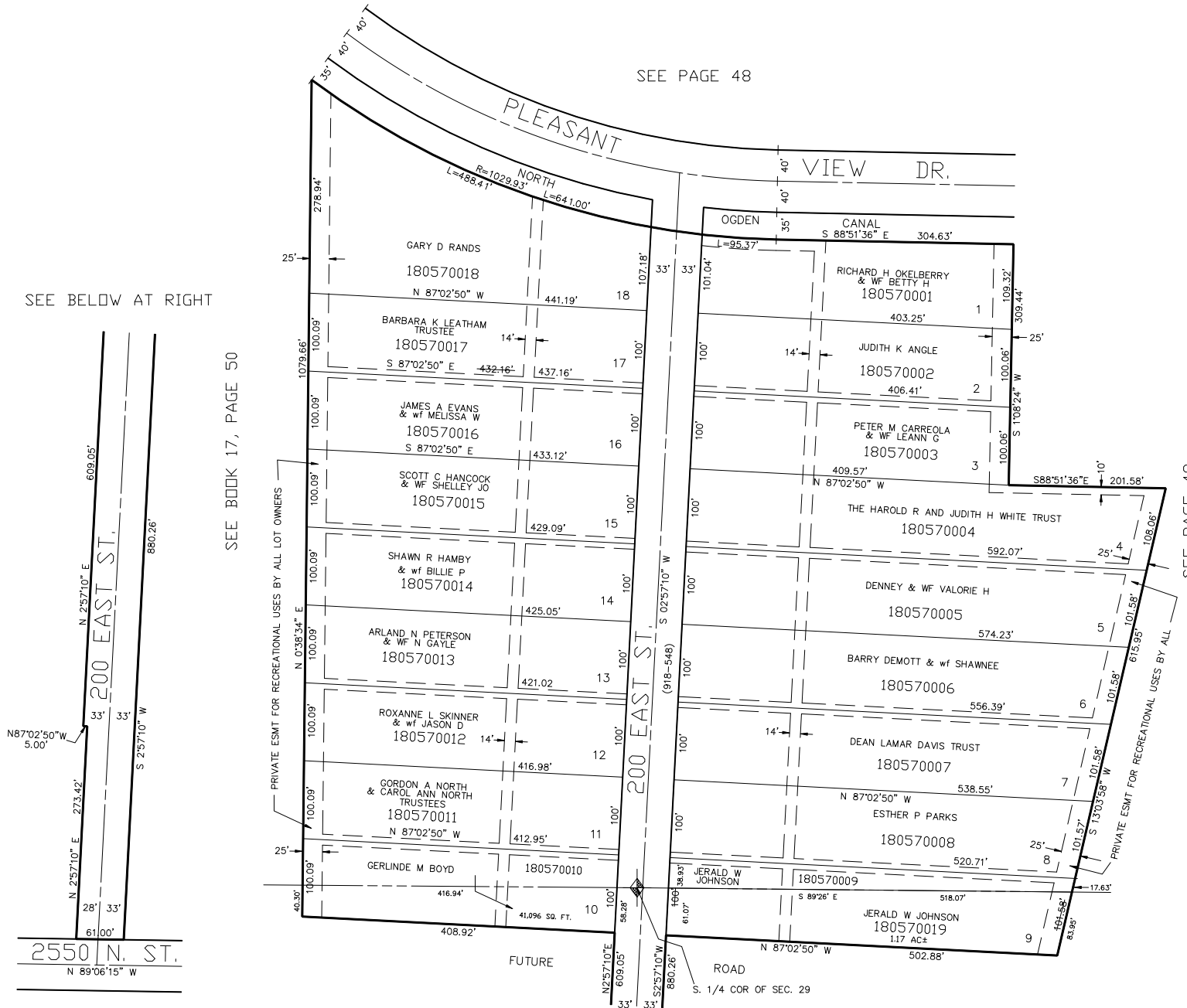
SCALE 1" = 100'

SEE PAGE 48

SEE BELOW AT RIGHT

SEE BOOK 17, PAGE 50

SEE PAGE 48



25' PRIVATE EASEMENT FOR RECREATIONAL USE BY ALL LOT OWNERS

SEE ABOVE AT LEFT

7' UTILITY & DRAINAGE EASEMENTS EACH SIDE OF PROPERTY LINES AS INDICATED BY DASHED LINES EXCEPT AS OTHERWISE SHOWN.